



# MediaSaver

[How to Register](#)

[Overview](#)

## Configuring GTI MediaSaver

[Setting GTI MediaSaver as your default screen saver](#)

[Choosing how GTI MediaSaver will display Images](#)

[Choosing the directory where the images are stored](#)

## Support

[How to get Support](#)

[What's New & Version History](#)

[Where to find the latest Version](#)

[Removing GTI MediaSaver](#)

## Misc.

[Copyright Notice](#)

[Other GTI Programs](#)

[ASP Ombudsman Statement](#)

## How to Register

If you are using the Shareware version of **GTI MediaSaver** you may evaluate it for 30 days. The Shareware version of **GTI MediaSaver** will time-out after 30 days. If you wish to continue using **GTI MediaSaver** after this time you must register it.

To receive the registered version (or if you already have a copy of the registered version and wish to order additional copies) of **GTI MediaSaver**, please use one of the methods listed below (**Note** the details below are for orders only, please refer to the How to get Support help topic for details of how to obtain Technical Support)

### By Post

Complete the registration form and send £10\* (sterling) or \$15\* (US), per copy plus the appropriate shipping charge to

G.T.I. Ltd.  
9 / 18 Mavisbank Gardens  
Festival Park  
Glasgow  
G51 1HG  
Scotland

### By E-Mail

Complete the registration form and e-mail it to [orders@gtisoftware.com](mailto:orders@gtisoftware.com) .

### On-Line Registration

If you prefer to register on-line you can do this via one of the following methods

**World Wide Web** GTI Online order page  
<http://www.gtisoftware.com/order.htm>

**CompuServe  
SWREG** **GTI MediaSaver** SWREG number is **14666**. To access the swreg system type **go swreg** at any Compuserve prompt and then follow the instructions on screen.

### Large Orders

For details of Multiple User, Site Licenses or Customised version please contact G.T.I. at the above UK address or send e-mail to [sales@gtisoftware.com](mailto:sales@gtisoftware.com) .

*GTI* are members of the Association of Shareware Professionals (ASP). Therefore in the unlikely event that you are dissatisfied with the service you have received from *GTI* you may lodge a formal complaint with the ASP. Please refer to the ASP Ombudsman Statement help topic for details of this procedure.

# GTI MediaSaver Registration Form

Name \_\_\_\_\_

Address \_\_\_\_\_  
\_\_\_\_\_  
\_\_\_\_\_

City \_\_\_\_\_

Postcode \_\_\_\_\_

Country \_\_\_\_\_

Telephone \_\_\_\_\_

Fax \_\_\_\_\_

E-Mail \_\_\_\_\_

Please send me :-

		(Sterling)	or (US)	Sub Total
_____ Copies GTI MediaSaver	@	£10*	\$15*	_____
_____ Shipping UK, Europe	@	£ 2*	\$ 3*	_____
Shipping Rest of World	@	£ 3*	\$ 5*	_____
VAT (UK,Europe Only)	@	17.5%		_____

Total Enclosed is \_\_\_\_\_

(\* Residents of member States of the European Union please also add VAT @ 17.5%)

I am paying by:

- CHEQUE/CHECK       EUROCHEQUE       CASH (registered mail only)  
 AMERICAN EXPRESS       MASTERCARD/  
EUROCARD       VISA

(Note GTI can only accept cash & cheques/checks in Pounds Sterling or US Dollars)

Credit Card Number \_\_\_\_\_-\_\_\_\_\_-\_\_\_\_\_-\_\_\_\_\_

Valid from date \_\_\_\_\_-\_\_\_\_\_-\_\_\_\_\_

Exp. date \_\_\_\_\_-\_\_\_\_\_-\_\_\_\_\_

\_\_\_\_\_  
(Signature)

\_\_\_\_\_  
(Date)

Make cheques/checks payable to: **Graham Technology & Information Ltd.**

Where did you hear about GTI MediaSaver ?

---

Comments

---

---

---

---

Post your completed order to

**G.T.I. Ltd.  
9 / 18 Mavisbank Gardens  
Festival Park  
Glasgow, G51 1HG  
Scotland**

or Email it to

**orders@gtisoftware.com**

## Overview

If you have a large collection of *jpeg*, *avi* and *mpeg* files then **GTI MediaSaver** is the Screen Saver you have been waiting for because now you can turn your collection into a multimedia Screen Saver slideshow.

Never again will you get bored seeing the same old Screen Saver again and again. Now you can use your own images, movies and sounds to create a unique personal Screen Saver.

**GTI MediaSaver** is ideal for displaying your favourite multimedia files from your collection or even use it to create an instant fully fledged multi media Screen Saver for your Company without having to write a single line of code.

Here are just some of the features of **GTI MediaSaver**

- ▶ *Support for both 256 and True Colour images*
- ▶ *Support for all the popular image, movie & sound formats*
- ▶ *Images (movies and sounds) automatically change after a user specified amount of time*
- ▶ *Cycle through all your multimedia files*
- ▶ *Different borders*
- ▶ *Password protection*
- ▶ *Automatically resizes images and movies*
- ▶ *Includes full context sensitive help*

**GTI MediaSaver** supports the following file formats

<i>Stills</i>	<i>.bmp .jpg .pcx .png .tga .wmf</i>
<i>Movies</i>	<i>.avi .mov .mp2 .mpa .mpeg .mpg .mpv</i>
<i>Sounds</i>	<i>.aif .aiff .au .mid .rmi .snd .wav</i>

**GTI MediaSaver** requires Windows95 (or Windows NT 4) and Microsoft ActiveMovie.

Registration cost for **GTI MediaSaver** is £10\* (sterling) or \$15\* (US).

**Note** The shareware version of **GTI MediaSaver** will cease to work 30 days after it was initially installed

## Help

Press the **help** button to display the help for the current tab.

For context sensitive help :-

*Either*

Press the **?** button and then click on the item you want to see help for

*Or*

Select the item you want to see help for then press the **F1** key

## Closing the Window

Press the **Ok** button or the **X** button to exit **GTI MediaSaver** config

## Copyright Notice & License

GTI MediaSaver copyright © 1996,1997 Graham Technology & Information Ltd. All rights reserved.

GTI MediaSaver, and the GTI logo are Trademarks of Graham Technology & Information Ltd.

All other Trademarks are acknowledged.

This software and accompanying documentation are protected by United Kingdom Copyright law and also by International Treaty provisions. Any use of this software in violation of Copyright law or the terms of this limited license will be prosecuted to the best of our ability.

### License (Shareware Version) License (Registered Version)

To find out which version of **GTI MediaSaver** you are using, and therefore which of the above licenses apply to you, please refer to the *Aboutbox* in the **GTI MediaSaver config page** . This will state if you have the Shareware or Registered version of **GTI MediaSaver**.

## LIMITED WARRANTY AND DISCLAIMER OF WARRANTY

(Shareware & Registered Version)

THIS SOFTWARE AND ACCOMPANYING WRITTEN MATERIALS (INCLUDING INSTRUCTIONS FOR USE) ARE PROVIDED "AS IS" WITHOUT WARRANTY OF ANY KIND. FURTHER, GRAHAM TECHNOLOGY & INFORMATION LTD (GTI) DOES NOT WARRANT, GUARANTEE, OR MAKE ANY REPRESENTATIONS REGARDING THE USE, OR THE RESULTS OF USE, OF THE SOFTWARE OR WRITTEN MATERIALS IN TERMS OF CORRECTNESS, ACCURACY, RELIABILITY, CURRENTNESS, OR OTHERWISE. THE ENTIRE RISK AS TO THE RESULTS AND PERFORMANCE OF THE SOFTWARE IS ASSUMED BY YOU. IF THE SOFTWARE OR WRITTEN MATERIALS ARE DEFECTIVE YOU, AND NOT GTI OR ITS DEALERS, DISTRIBUTORS, AGENTS, OR EMPLOYEES, ASSUME THE ENTIRE COST OF ALL NECESSARY SERVICING, REPAIR, OR CORRECTION.

THE ABOVE IS THE ONLY WARRANTY OF ANY KIND, EITHER EXPRESS OR IMPLIED, INCLUDING BUT NOT LIMITED TO THE IMPLIED WARRANTIES OF MERCHANTABILITY AND FITNESS FOR A PARTICULAR PURPOSE, THAT IS MADE BY GTI, ON THIS GTI PRODUCT. NO ORAL OR WRITTEN INFORMATION OR ADVICE GIVEN BY GTI, ITS DEALERS, DISTRIBUTORS, AGENTS OR EMPLOYEES SHALL CREATE A WARRANTY OR IN ANY WAY INCREASE THE SCOPE OF THIS WARRANTY AND YOU MAY NOT RELY ON ANY SUCH INFORMATION OR ADVICE. YOU MAY HAVE OTHER RIGHTS WHICH VARY FROM STATE TO STATE.

NEITHER GTI NOR ANYONE ELSE WHO HAS BEEN INVOLVED IN THE CREATION, PRODUCTION OR DELIVERY OF THIS PRODUCT SHALL BE LIABLE FOR ANY DIRECT, INDIRECT, CONSEQUENTIAL OR INCIDENTAL DAMAGES (INCLUDING DAMAGES FOR LOSS OF BUSINESS PROFITS, BUSINESS INTERRUPTION, LOSS OF BUSINESS INFORMATION, AND THE LIKE) ARISING OUT OF THE USE OR INABILITY TO USE SUCH PRODUCT EVEN IF GTI HAS BEEN ADVISED OF THE POSSIBILITY OF SUCH DAMAGES.

THIS LIMITED WARRANTY SHALL BE GOVERNED BY THE LAWS OF SCOTLAND. THE UNITED NATIONS CONVENTION ON CONTRACTS FOR THE INTERNATIONAL SALE OF GOODS IS SPECIFICALLY DISCLAIMED.

BY USING GTI MEDIASAVER YOU ACKNOWLEDGE THAT YOU HAVE READ THIS LIMITED WARRANTY, UNDERSTAND IT, AND AGREE TO BE BOUND BY ITS' TERMS AND CONDITIONS. YOU ALSO AGREE THAT THE LIMITED WARRANTY IS THE COMPLETE AND EXCLUSIVE STATEMENT OF AGREEMENT BETWEEN THE PARTIES AND SUPERSEDE ALL PROPOSALS OR PRIOR AGREEMENTS, ORAL OR WRITTEN, AND ANY OTHER COMMUNICATIONS BETWEEN THE PARTIES RELATING TO THE SUBJECT MATTER OF THE LIMITED WARRANTY.





## License (Shareware Version)

This version of **GTI MediaSaver** (the software) is released as Shareware. Graham Technology & Information, Ltd (GTI) hereby grants you a limited license to use the software for evaluation purposes for a period not to exceed thirty (30) days. If you intend to continue using this software (and/or it's documentation) after the thirty (30) day evaluation period, you MUST make a registration payment to GTI.

Using this software after the thirty (30) day evaluation period, without registering the software is a violation of the terms of this limited license.

You may not: rent, lease, modify, translate, disassemble, decompile, reverse engineer, or create derivative works based upon the Software.

All rights not expressly granted here are reserved to GTI .

See the help topic [How to Register](#) for more information.

## Distribution

You are encouraged to pass a copy of the Shareware version of **GTI MediaSaver** along to your friends and colleagues for evaluation. You may also upload copies of it to bulletin boards, online services and the Internet.

If you do so, you must include all the **GTI MediaSaver** shareware files.

If you include **GTI MediaSaver** as part of a commercially released Shareware Collection or as part of a Magazine or Book cover disk you must clearly state that a separate registration fee is payable to the Package Author (or their Agents) to continue using Shareware beyond the evaluation period.

## License (Registered Version)

Grant of License. Graham Technology & Information, Ltd (GTI) hereby grants to you the right to use one (1) copy of the enclosed GTI program (the "Software") on a single computer. For purposes of this section, "use" means loading the Software into RAM, as well as installation on a hard disk or other storage device.

You may not: rent, lease, modify, translate, disassemble, decompile, reverse engineer, or create derivative works based upon the Software.

U.S. Government Information: Use, duplication, or disclosure by the U.S. Government of the computer software and documentation in this package shall be subject to the restricted rights applicable to commercial computer software as set forth in subdivision (b)(3)(ii) of the Rights in Technical Data and Computer Software clause at 252.227-7013 (DFARS 52.227-7013). The Contractor/manufacturer is Graham Technology & Information Ltd, 9/18 Mavisbank Gardens, Festival Park, Glasgow, G51 1HG, Scotland.

The licensed program is licensed, not sold. Nothing in this agreement shall be construed as conveying title in the licensed program to Licensee.

The Software, together with any archive copy thereof, shall be either returned to GTI or destroyed when no longer used in accordance with this Agreement, or when the right to use the Software is terminated.

All rights not expressly granted here are reserved to GTI .

If you wish to order additional copies please refer to the help topic [How to Register](#) for more information.

## Distribution

You MUST NOT pass on to anyone copies of this version of **GTI MediaSaver** or upload it to Bulletin Boards, Online Services or the Internet. This is a registered version, it is NOT SHAREWARE.

# What's New & Version History

## Version 1.0

Initial Release

## How to get Support

If you have any problems with **GTI MediaSaver** please send an E-Mail message to  
[support@gtisoftware.com](mailto:support@gtisoftware.com)

Please include a full description of the problem, the version of **GTI MediaSaver** , the configuration of your PC and any other information you feel may be relevant to the problem.

**Note** Support is *ONLY* guaranteed for registered users. However we will attempt to provide support whenever possible for users of the Shareware version.

G.T.I. are members of the Association of Shareware Professionals (ASP). Therefore in the unlikely event that you are dissatisfied with the support you have received from G.T.I. you may lodge a formal complaint with the ASP. Please refer to the [ASP Ombudsman Statement](#) help topic for details of this procedure.

## Where to find the latest Version

The latest shareware version of **GTI MediaSaver** can be found on GTI's Web site at

<http://www.gtisoft.com/programs/gtimedia.htm>

You will also find the latest shareware version of **GTI MediaSaver** in the following places.

### Online Services

Compulink Information Exchange (CIX) (UK based, with World Wide access via the Internet)

CompuServe (World Wide)

### Internet

FTP archives (World Wide)

WWW (World Wide)

### BBS

*Belgium* Edge Of Delight

## **CIX**

CIX is a UK based subscription conferencing system. You will find the latest version of **GTI MediaSaver** in the *2newfiles* topic of the *filepool* conference.

CIX's phone number is 0181 296 1255 all speeds upto V.34 are supported.

Via the Internet telnet to *cix.compulink.co.uk* .

## CompuServe

CompuServe is a world-wide subscription conferencing system. You will find the latest version of [GTI MediaSaver](#) in the *pikapro* forum and library S20 of the *winav* forum.

## Internet FTP archives

You will find the latest version of [GTI MediaSaver](#) on many FTP archives including Cica & Simtel mirror sites.



## **Internet WWW**

You will find the latest version of **GTI MediaSaver** on the following Web Site.

*G.T.I.'s home page*

**<http://www.gtisoftware.com>**



## **Ombudsman Statement**

G.T.I. are members of the Association of Shareware Professionals (ASP). The ASP wants to make sure that the Shareware principle works for you. If you are unable to resolve a Shareware-related problem with an ASP member by contacting the member directly, ASP may be able to help.

The ASP Ombudsman can help you resolve a dispute or problem with an ASP member, but does not provide technical support for members' products. Please write to the ASP Ombudsman at

**545 Grover Road,  
Muskegon,  
MI 49442-9427,  
USA**

or FAX the ASP Ombudsman

**616-788-2765**

or send a CompuServe message via CompuServe Mail to the ASP Ombudsman

**70007,3536**

or send an e-mail via the Internet to the ASP Ombudsman

**70007.3536@compuserve.com**

## Removing GTI MediaSaver

To remove GTI MediaSaver .....

\*\*\*\*\*

## Edge of Delight BBS

Edge Of Delight DiSTSiTE Officiel For GTI's software

*Nodes* : 1) +32-2-375.5651 Boca 28.8K 2:293/735  
2) +32-2-375.8923 ZyXel 19.2K

Email: [pascal.vandersteegen@infoboard.be](mailto:pascal.vandersteegen@infoboard.be)

Hobby\_Soft: 32:400/2

Dgl : 68:320/5

fidonet.org: 2:291/735

## **Movement Speed**

This scrollbar controls how fast (or slow) the image moves across the screen

## About Button

Press the ***About*** button to display GTI MediaSavers “about box”

## **Delay between image changes**

This scrollbar controls how long an image is displayed before the next image is loaded.

## Setting GTI MediaSaver as you default Screen Saver

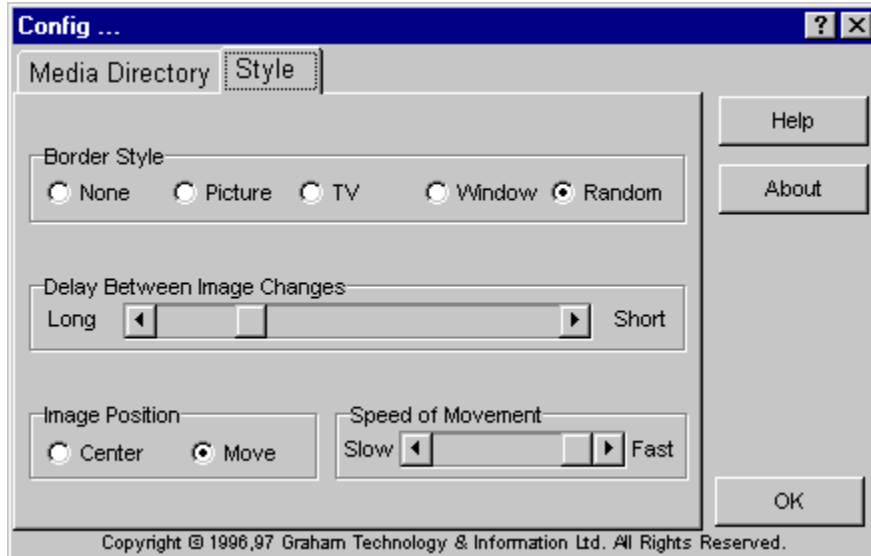
Use the Windows *control panel* to set **GTI MediaSaver** as your default screen saver.

For more detailed instructions please refer to the [Setting Up a Screen Saver](#) topic in the standard Windows help file.



## Style Tab

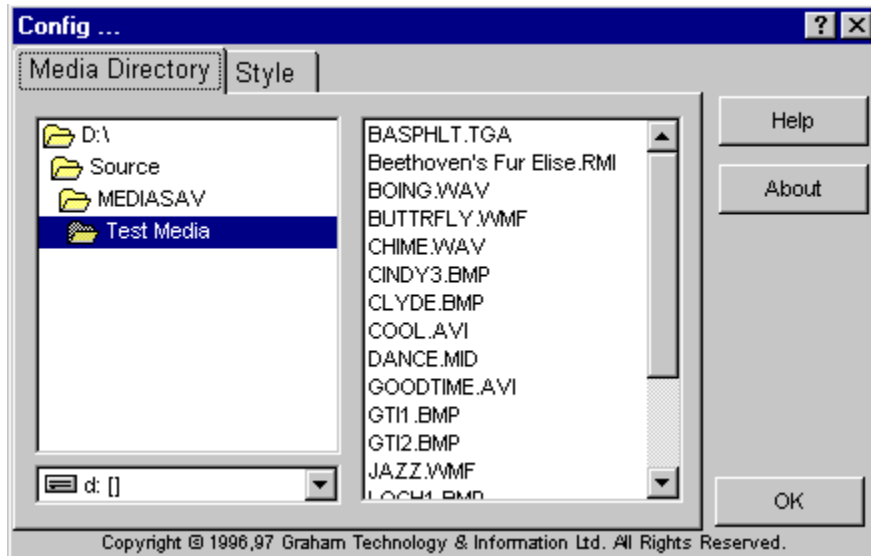
The **Style** tab controls how **GTI MediaSaver** will display the media files



*(Click on the buttons and controls, above, to find out what they are for.)*

## Media Directory Tab

The **Media Diectory** tab controls where **GTI MediaSaver** will select the media files from



*(Click on the buttons and controls, above, to find out what they are for.)*

## Other GTI Programs

Here are some other programs you can download from our web site at <http://www.gtisoftware.com>

<b><i>GTI Desktop+</i></b>	Windows desktop enhancer. Includes screen savers, animated wallpaper, custom cursors, wallpaper randomizer , wallpapers, sounds, etc.
<b><i>GTI Drag'n'... Utils</i></b>	Drag'n'Drop utils. Includes trashcan, sound player, image viewer and file printer. <i>(Windows 3.X Only)</i>
<b><i>GTI WordGrid</i></b>	Word Search Puzzle. Play puzzles on screen or print them out to play with pen and paper.

## **Choose border style**

Choose the border that will be placed around the image

## **Image Movement**

Choose if the image will be static (centered) or move across the screen

## Select Media Directory

Use the "drive" and "directory" boxes to choose the directory you want to use as the source for the media files **GTI MediaSaver** will use

## **Media files in current directory**

List of media files in the current directory

